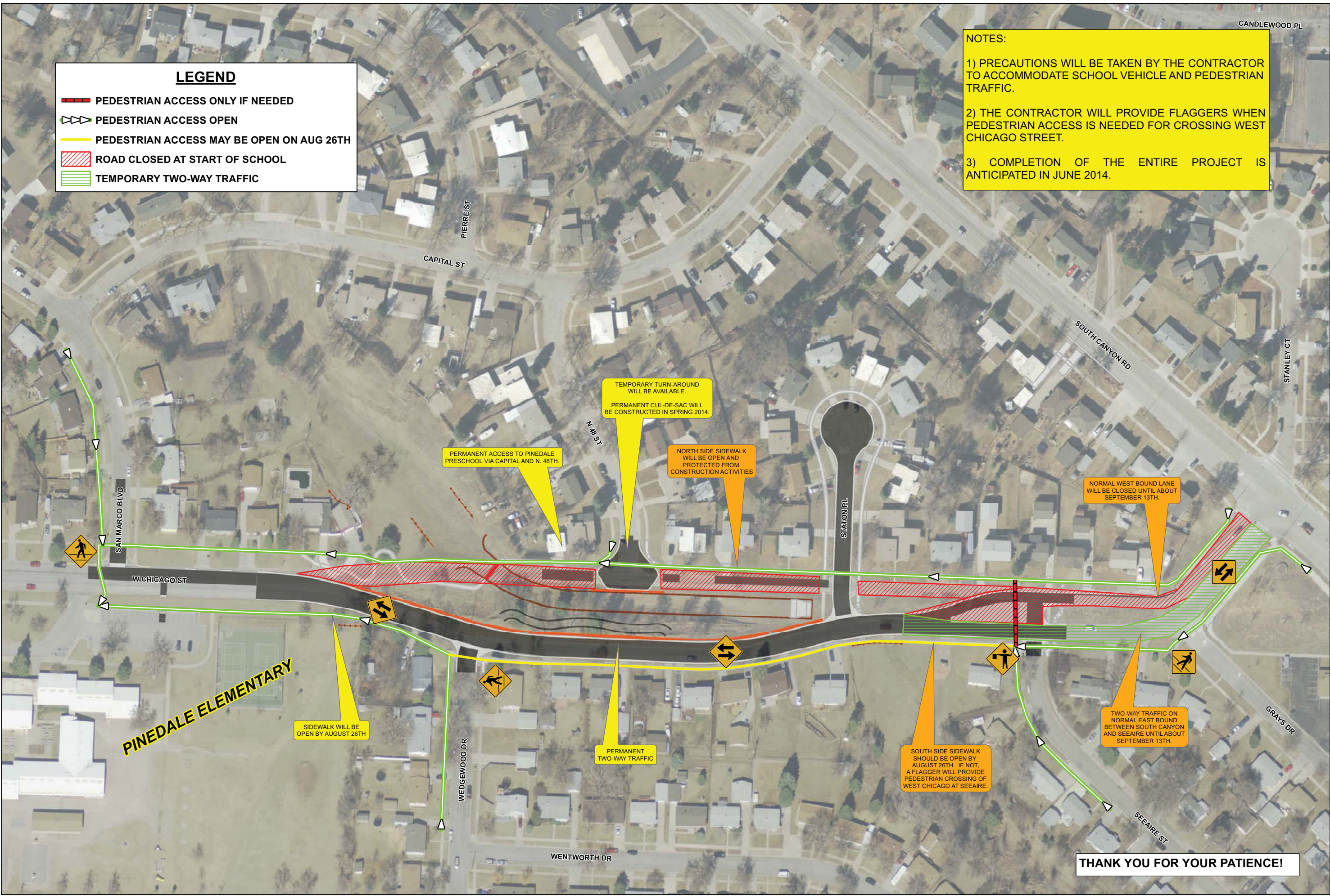


LEGEND

- PEDESTRIAN ACCESS ONLY IF NEEDED
- PEDESTRIAN ACCESS OPEN
- PEDESTRIAN ACCESS MAY BE OPEN ON AUG 26TH
- ROAD CLOSED AT START OF SCHOOL
- TEMPORARY TWO-WAY TRAFFIC

NOTES:

- 1) PRECAUTIONS WILL BE TAKEN BY THE CONTRACTOR TO ACCOMMODATE SCHOOL VEHICLE AND PEDESTRIAN TRAFFIC.
- 2) THE CONTRACTOR WILL PROVIDE FLAGGERS WHEN PEDESTRIAN ACCESS IS NEEDED FOR CROSSING WEST CHICAGO STREET.
- 3) COMPLETION OF THE ENTIRE PROJECT IS ANTICIPATED IN JUNE 2014.



Prepared For:

Prepared By: **Ferber Engineering Company, Inc.**
Civil Engineering • Water Resources • Transportation • Land Surveying • GIS
 729 East Waterdown St., Rapid City, SD 57701 • Phone: (605) 343-3311

CITY OF RAPID CITY

WEST CHICAGO STREET AND STATION PLACE RECONSTRUCTION

CITY PROJECT 12-1187 / CIP 50364

Sheet Title: **PINEDALE SCHOOL CONSTRUCTION TRAFFIC NOTES**

Sheet: